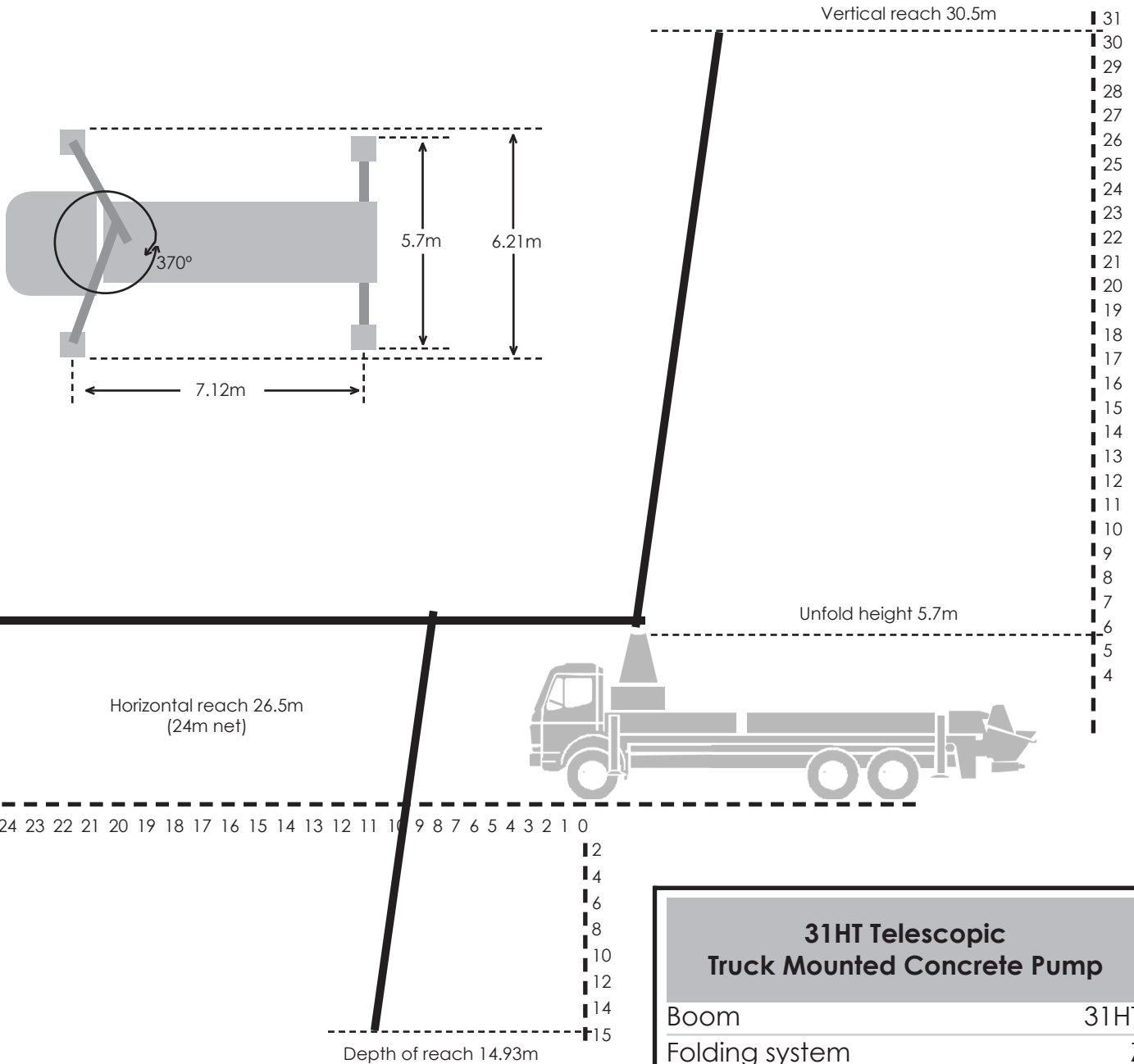


31HT Telescopic Truck Mounted Concrete Pump



31HT Telescopic Truck Mounted Concrete Pump	
Boom	31HT
Folding system	Z
Delivery line	DN125
Vertical reach	30.5m
Horizontal reach (gross)	26.5m
Horizontal reach (net)	24.0m
Depth of Reach	14.93m
Unfold height	5.7m
Telescope	4.6m
Number of arms	4
Length of end hose	4.0m
Front outrigger load	200kN
Rear outrigger load	160kN

