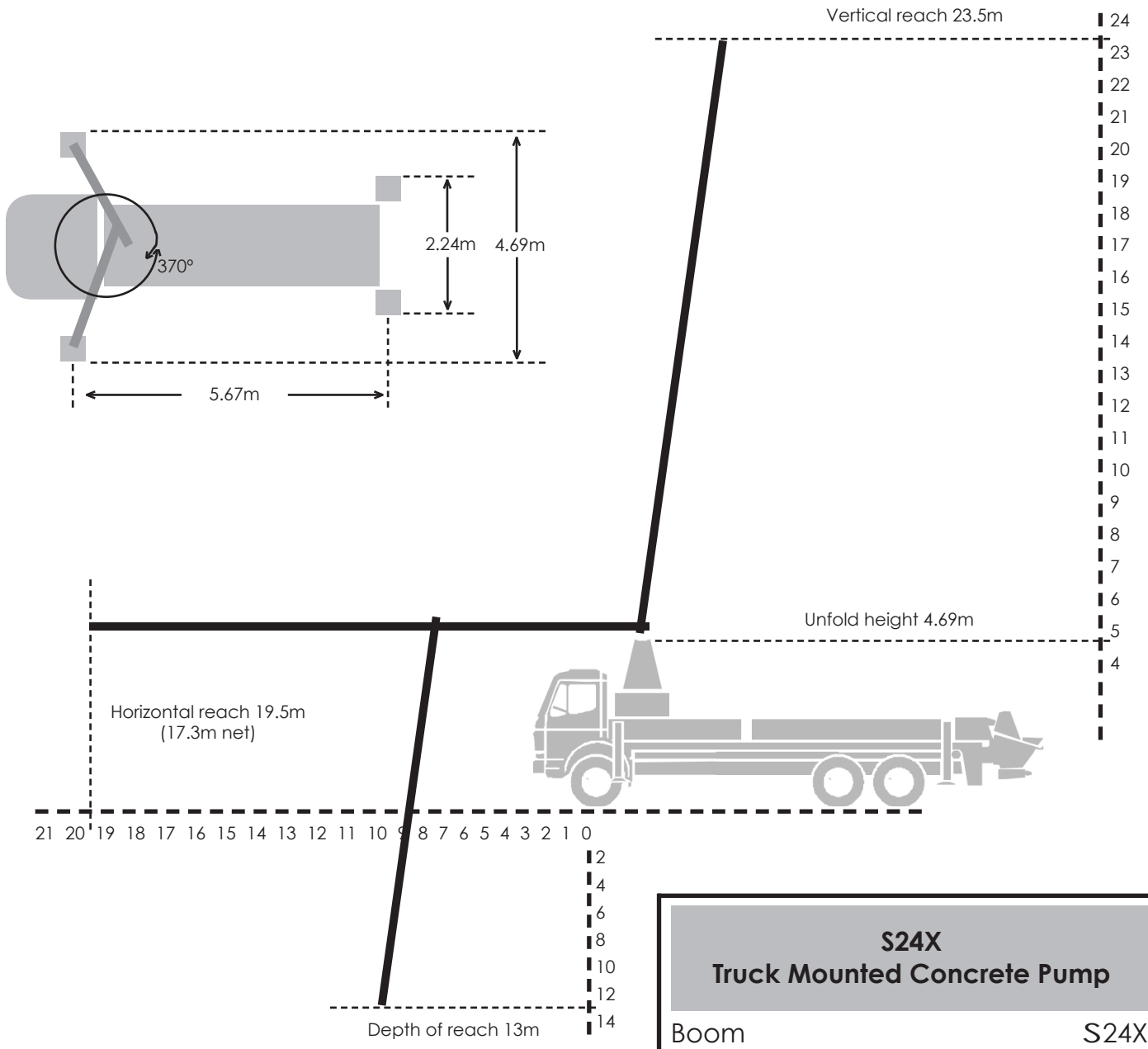


## S24X Truck Mounted Concrete Pump



S24X Truck Mounted Concrete Pump	
Boom	S24X
Folding system	R-Z
Delivery line	DN125
Vertical reach	23.5m
Horizontal reach (gross)	19.5m
Horizontal reach (net)	17.3m
Depth of Reach	13.0m
Unfold height	4.69m
Number of arms	4
Length of end hose	3.0m
Front outrigger load	140kN
Rear outrigger load	90kN

